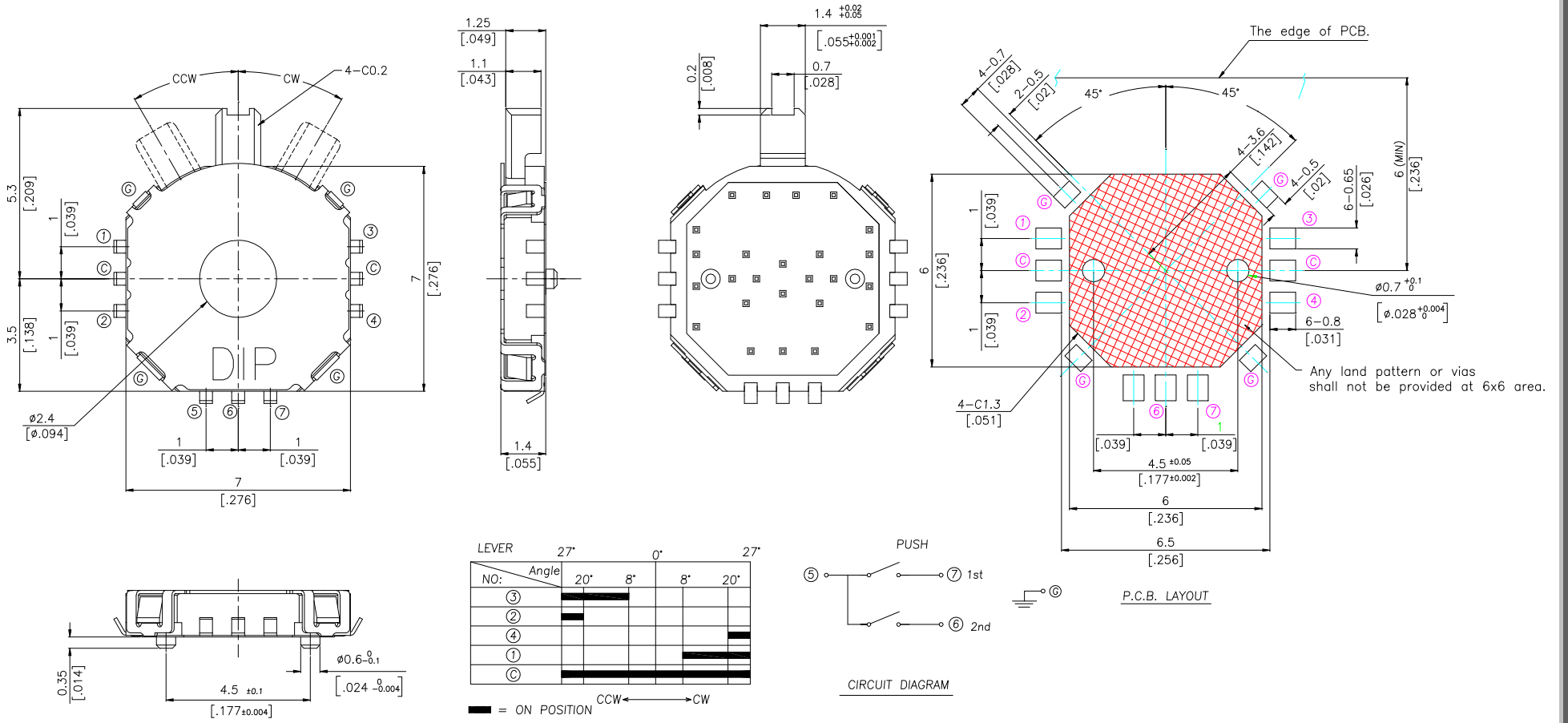




# M2P SERIES

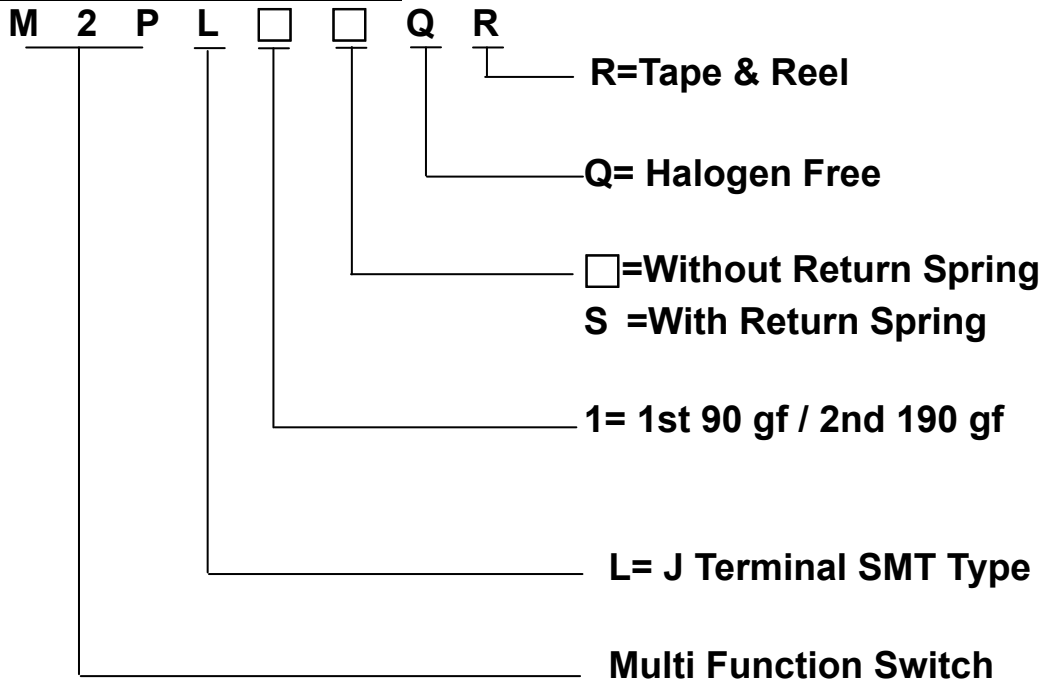
## DIMENSIONS

### M2P



**\*\*GENERAL TOLERANCES MAX:±0.2mm.\*\***

## HOW TO ORDER



## **SPECIFICATION**

### **△ MECHANICAL**

**Mechanical Life : 50,000 cycles.**

**Operation Force : Lever 70gf.cm max**

**Push 1<sup>st</sup> 90±40gf**

**2<sup>nd</sup> 190±60gf**

**Stroke :**

**Lever : 1<sup>st</sup> 8°±3°**

**2<sup>nd</sup> 20°±3°**

**Push : 1<sup>st</sup> 0.15±0.10mm**

**2<sup>nd</sup> 0.3±0.15 mm**

**Operation Temperature Range : -40°C to +85°C**

**Storage Temperature Range : -40°C to +85°C**

### **△ ELECTRICAL**

**Rating : 3VDC 0.1mA ~ 5VDC 10mA**

**Contact Resistance: 1Ω max.**

**Insulation Resistance: 100MΩ min. at 100VDC**

**Dielectric Strength: 250VAC/1 minute**

## **MATERIAL**

**△ Terminal : Phosphor Bronze, With Silver Plating**

**△ Base : High-Temp Thermoplastic LCP UL 94V-0**

**△ Stem : High-Temp Thermoplastic LCP UL 94V-0**

**△ Lever : High-Temp Thermoplastic LCP UL 94V-0**

**△ Cover : Stainless Steel**

**△ Contact : Stainless and Phosphor Bronze, With Silver Plating**

**△ Spring : Stainless Steel**

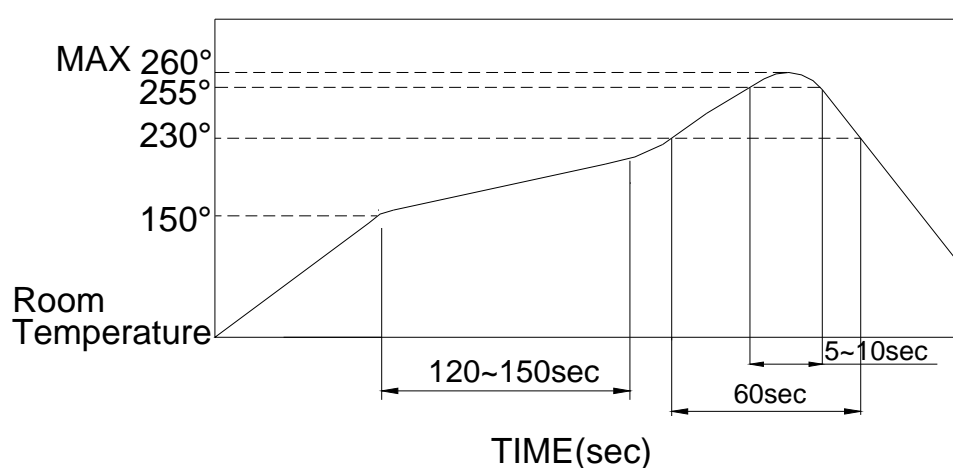
## **SOLDERING PROCESS**

**△ HAND SOLDERING: Use a soldering iron of 30 watts, controlled at 350°C approximately 5 seconds.**

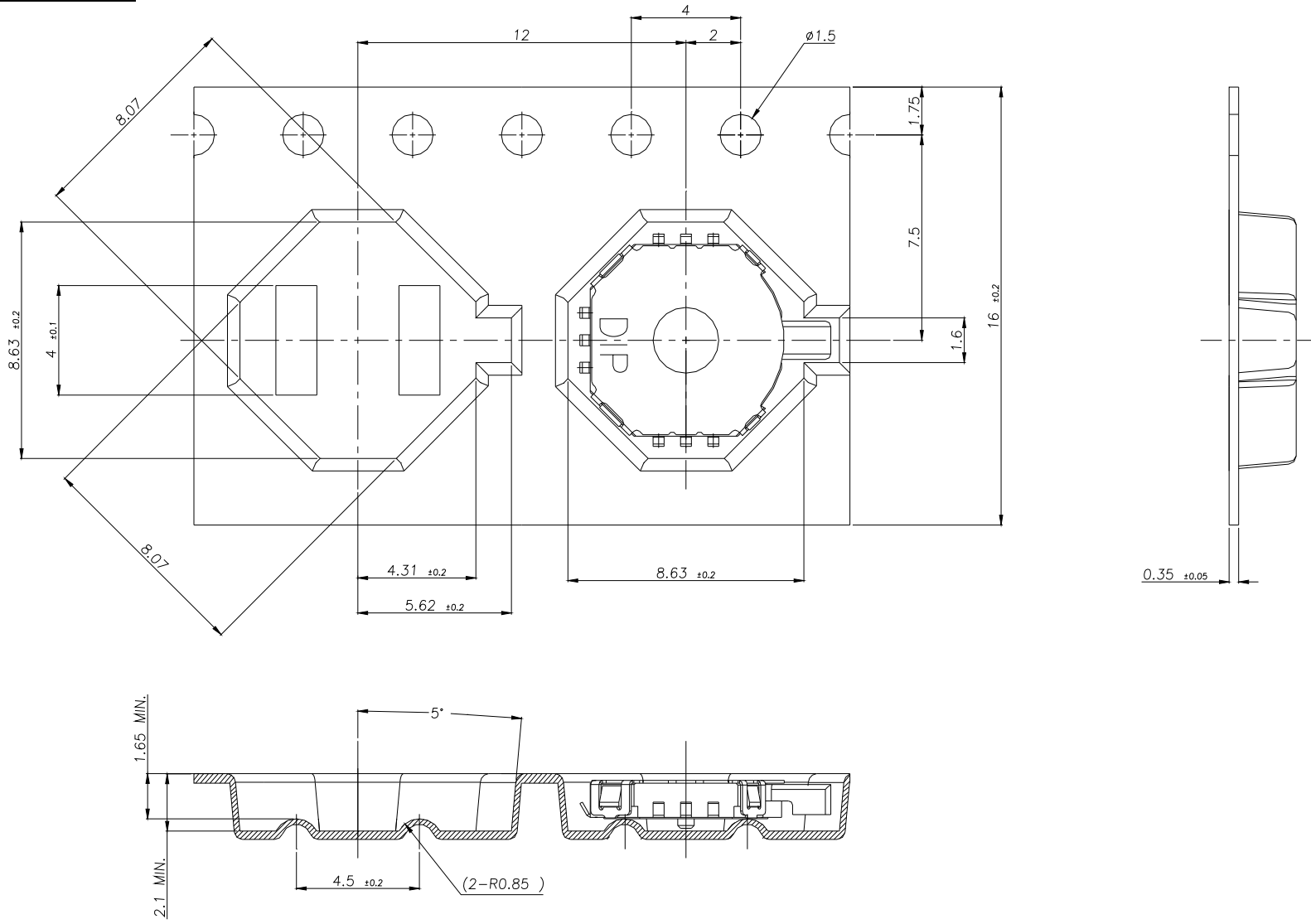
**△ REFLOW SOLDERING: When applying reflow soldering, the peak temperature or the reflow oven should be set at 260°C max.**

**△ Any flux enters the switch may fail the conductivity.**

**△ Reflow Temperature Profile: (reference)**



# PACKING



**\*\*GENERAL TOLERANCES MAX:±0.1mm.\*\***

Part Number	Number Per Tube	Number Per Reel
M2P	-	2300